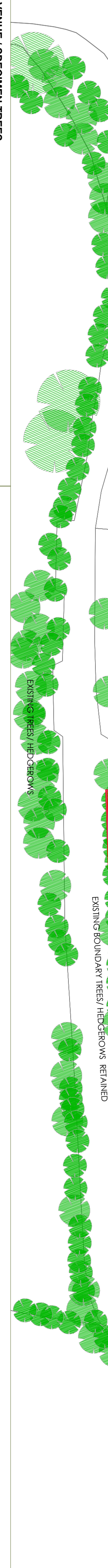
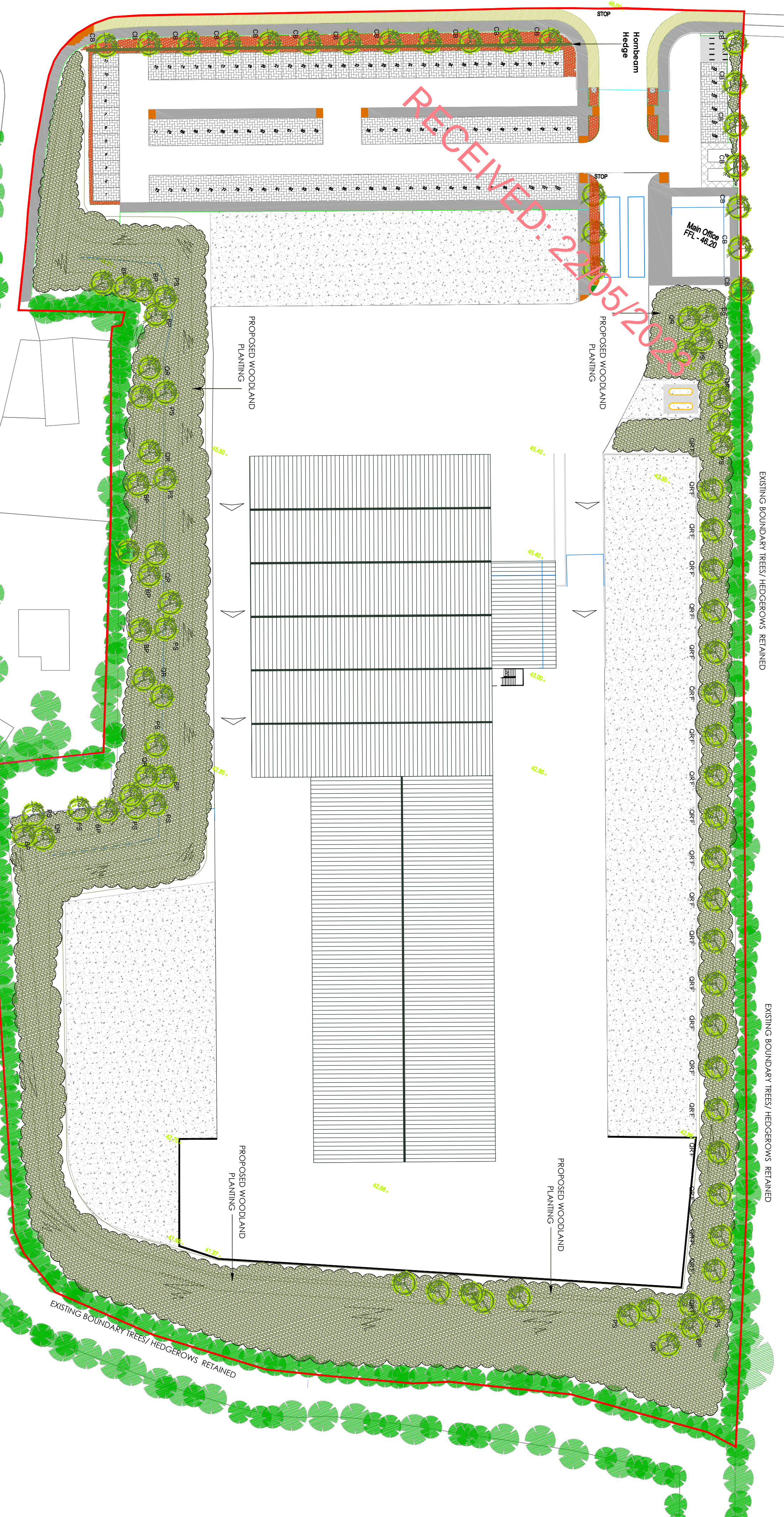
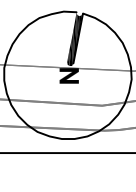


RECEIVED: 22/05/2023

APPENDIX 4

LANDSCAPING PLAN (MULLIN DESIGN ASSOCIATES)



AVENUE / SPECIMEN TREES

SPECIES	COMMON	SIZE (mm)	GROW	HABIT	NUMBER
Q1 Quercus robur	Oak	18-20cm	Rotball	Clear Stem	10
Q2 Quercus robur	Oak - Columnar	18-20cm	Rotball	Clear Stem	22
Q3 Betula pendula	Birch	16-18cm	Rotball	Clear Stem	10
Q4 Carpinus betulus Frax Frax	Hornbeam	16-18cm	Rotball	Clear Stem	18
Q5 Prunus Strydom	Scots Pine	16-18cm	Rotball	Bushy	14

WOODLAND MIX - 10% Light standards

% SPECIES	COMMON	SIZE	GROW	TRANSPLANTS	DENSITY
Q1 15% Quercus robur	Oak	60-90cm	BR	1 + 1 Branched	375
Q2 20% Pinus sylvestris	Scots Pine	60-90cm	BR	1 + 1 Branched	500
Q3 10% Betula pendula	Birch	60-90cm	BR	1 + 1 Branched	250
Q4 5% Carpinus betulus	Hornbeam	60-90cm	BR	1 + 1 Branched	250
Q5 5% Sorbus aucuparia	Roslyn	60-90cm	BR	1 + 1 Branched	125
Q6 10% Catalpa monnina	Hawthorn	60-90cm	BR	1 + 1 Branched	250
Q7 5% Corylus avellana	Hazel	60-90cm	BR	1 + 1 Branched	250
Q8 5% Pinus spicata	Holly	60-90cm	BR	1 + 1 Branched	250
Q9 5% Ilex aquifolium	Holly	60-90cm	BR	1 + 1 Branched	250
Q10 5% Acer campestre	Field Maple	60-90cm	BR	1 + 1 Branched	250
Q11 5% Ulex europaeus	Gorse	60-90cm	BR	1 + 1 Branched	250
Q12 5% Salix cinerea	Grey Willow	60-90cm	BR	1 + 1 Branched	250

CLIPPED HEDGE

SPECIES	COMMON	SIZE	GROW	HABIT/BREAKS	DENSITY
CB	Carpinus betulus	Hornbeam	BR	Feathered	400mm BS

SHRUB & GROUND COVER MIX

% SPECIES	SIZE	GROWN	HABIT/BREAKS	DENSITY
20% Cornus Alba	40-60cm	PG 3L	Branched (3)	1 per m2
20% Cornus Stolonifera Flav'	40-60cm	PG 3L	Branched (3)	1 per m2
10% Macarantus Morning Light	40-60cm	PG 3L	Branched (3)	2 per m2
10% Stipa germanica Frosted Gulls	40-60cm	PG 3L	Branched (3)	3 per m2
10% Stipa germanica Fairy Tails	40-60cm	PG 3L	Branched (3)	3 per m2
10% Hebeclivus Hedges	40-60cm	PG 3L	Branched (3)	3 per m2
20% Hebeclivus Hedges	40-60cm	PG 3L	Branched (3)	6 per m2

FUNCTION OF PLANNING

The primary aim of the Landscape Proposals are to:

1. Introduce a strong landscape structure designed to reduce potential visual impact and appropriately integrate the proposal into the existing landscape.
2. Create a landscape character area associated with the site.
3. Retain and protect all existing boundary planting and all healthy trees within the site.
4. Implement a detailed landscape maintenance and management plan for all existing and proposed planting.
5. Where required, implement screening provided by existing structure planting. This will have several valuable functions: provide 2 way visual screening, create shelter and improve microclimate, improve integration of the development into the site and provide a visible habitat.

MAINTENANCE PERIOD:

All planting proposed to be introduced at the first available planting season after the development has commenced on site. All topsoil should meet the required specification and be left, cultivated and swarded before occupation.

LANDSCAPE MANAGEMENT (YEAR 1-10)

EXISTING MATURE TREES:
All retained trees to be inspected annually for defects or disease and managed in accordance with best arboricultural practices current at the time of assessment and execution of remedial work.

AVENUE AND SPECIMEN TREES: (All stake trees)
All stake trees to be inspected every other year to ensure that stakes, ties, etc are in good condition and adjust or replaced to maintain healthy development. Carry out a minimum diameter of one metre around the base free of weeds and bare every year to avoid bark damage by maintenance machinery. Replace damaged or failed stakes in accordance with the original planting specification.

Year 4-10

High-level inspection per annum. Trees subject to cable probing, staking or other mechanical support should be inspected twice each year. Trees in lower risk categories may be subject to longer inspection intervals by qualified arboriculturalist in spring to identify (and assess) any biological condition. Staking/spraying of tree bases in April and August to control weed growth.

Stakes removed at year 5 or as instructed. Remove dead, dying or damaged branches every other year. Remove damaged or failed trees in accordance with the original planting specification. A method statement should be prepared for these operations.

Shrub & Woodland (annual)

Maintain shrub & woodland areas in a weed free condition by the use of an approved herbicide. Fine minor damage back to healthy wood and check for and treat disease. Carry out to replace damaged or failed plant material in accordance with the original planting specification, which shall form part of the management documentation. Check protective fencing, where used, and maintain in good condition.

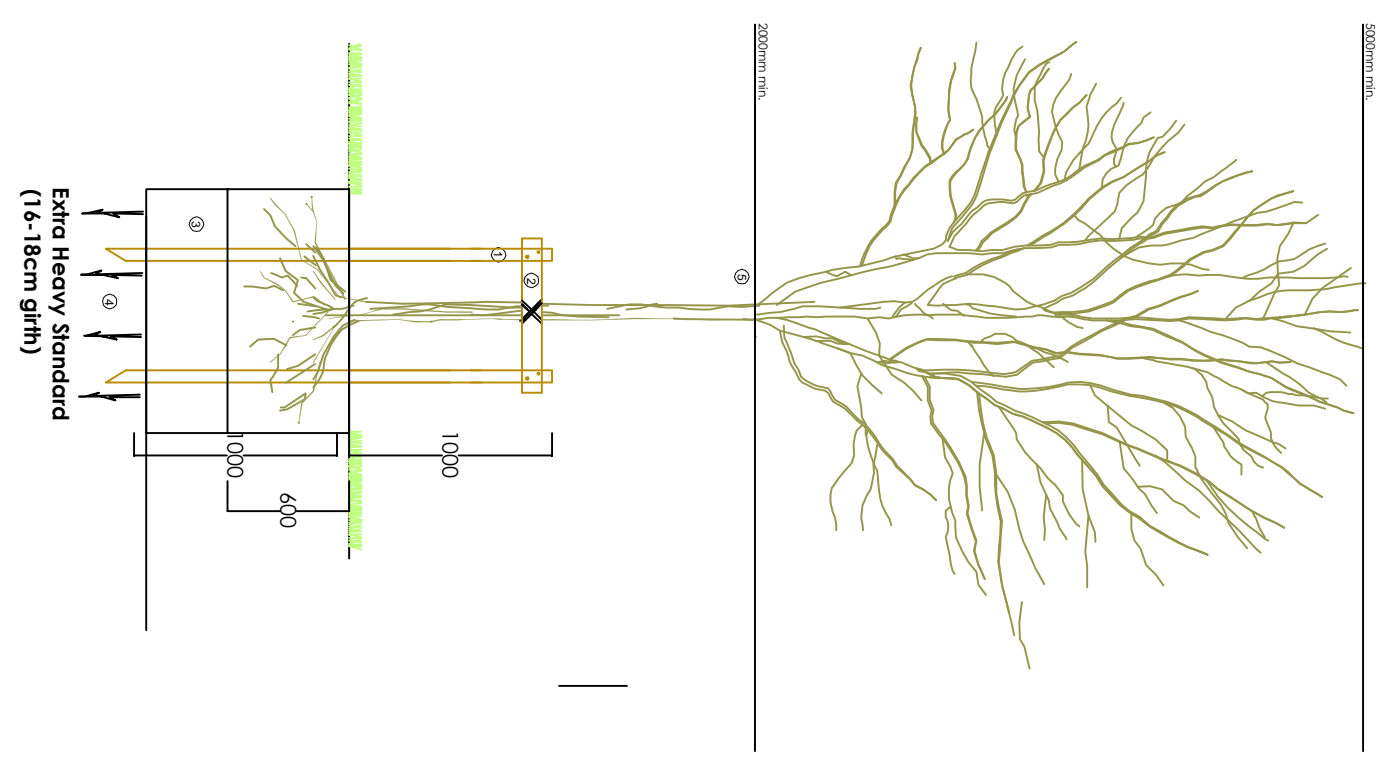
Year 4-10

As complete merge, remove guards and stakes and cease weed control. Thin out weakest specimens if planting becomes overcrowded and start to restrict growth. 1 in 10 basic-level inspection per annum by qualified arboriculturalist (in autumn) to coincide with fungal (fruiting) to check physiological and biological condition. Professional inspections and arboricultural works as necessary arising from basic-level inspections.

Hedge Maintenance

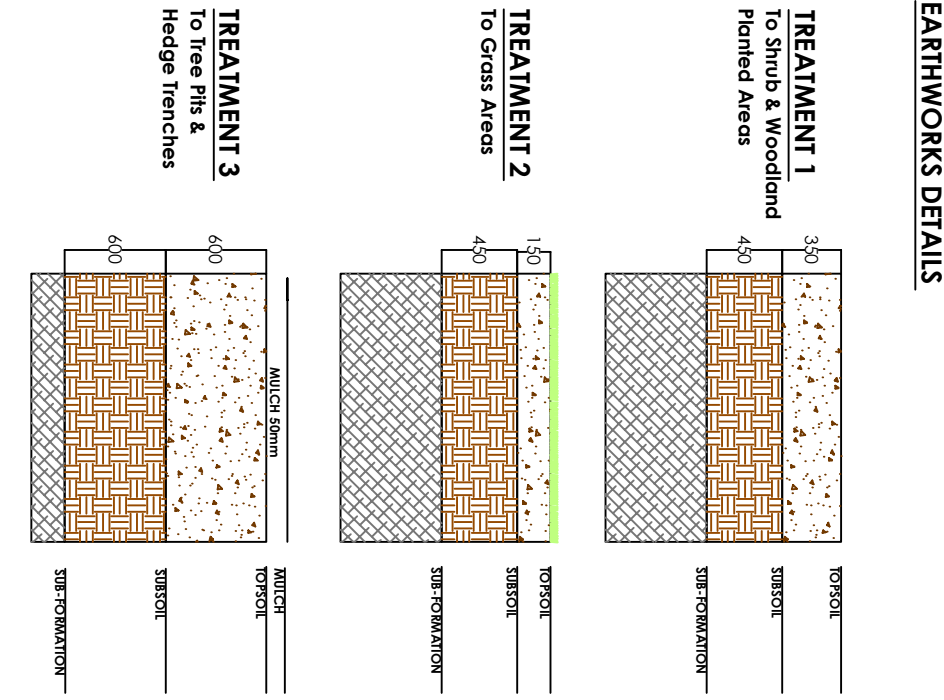
Hedges should ideally be planted in the autumn when the soil is warm after the summer and damp from autumn rain. Planted a double or triple row of trees to create width. If space is restricted a single row of plants zig-zagged slightly to allow root space. Do not cut top leader growth until plants has reached 1.8m in height when there is no chance of straggling leading back. It is best to prune deciduous varieties in late autumn when they are dormant. Cut back stable hard in the first couple of years so the hedges thicken up at the base. Deciduous species are usually pruned twice annually, first in winter while dormant and again in mid-summer. If using electrical or fuel powered steers, exercise all precautions as instructed by manufacturer. Cut hedges in an angle (topped sides). Heavy snowfall may on top of a hedge can cause serious damage. Remove snow removed as soon as possible to reduce the unseasoned weight. Heavy pruning on top of a hedge can cause soil spots if they are left to decay where they fall. It is best to clear them up when you finish hedge trimming.

PLANNING DETAILS

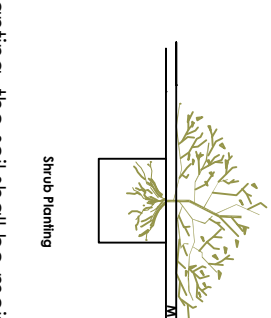


1. 75mm dia stakes pressure headed driven 1300mm below ground 1000 above ground with 100mm deep crown.
2. Tie offset to tree and crossbrace.
3. Bull size - Dia shaped as indicated, edges or pit to be scaled leaving an open textured face. Nominal size 1000x1000x600.
4. Fork over base of pit.
5. To have a clear stem height of 2000mm girth 14-18cm, min. height 4m min, 6 no. branches.

EARTHWORKS DETAILS



- Mulch Planting**
1. 1.5m pointed cone driven into ground until firm.
 2. Cone struck into Shaded/Side/Down spiral free guard.
 3. 300mm dia of mulch (50mm deep) around base.
 4. Root collar planted with slow release fertilizer and watered until saturated.

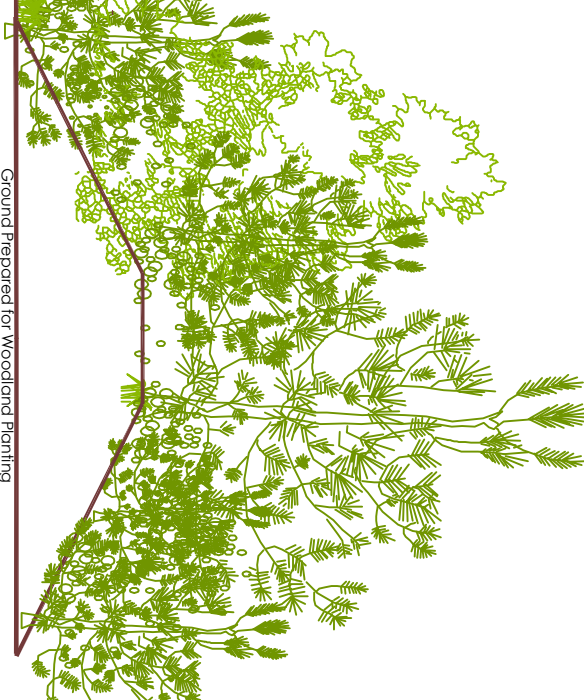


1. At planting, the soil shall be moist and not overly dry, or waterlogged.
2. The hole shall be of sufficient size to accommodate the root spread and stock shall be planted so that after any settlement the rootball will be at the same depth as it was grown in the nursery. The base of the planting pit shall be broken up before planting.
3. The excavated material shall be banded around the plant, roots and soil substrate.
4. Plant heights as specified in the plant schedule.

Hedge Establishment
Excavate trench 750mm wide x 450 mm deep. Rip sides and open base drainage. Backfill with approved (improved if necessary) topsoil incorporating plant compost of 200mm per m2. Single row and double row planting at 500mm per meter (NOTE: Where wider hedgerows are shown on plan, additional offset rows required).

Treat each plant with oliguree root dip and 70g/m emmoga/at planting. Finish with 50mm approved depth well composed bark mulch / water worn gravel. Planting should ideally be in the autumn when the soil is warm after the summer and damp from the autumn rain.

Immediately after planting, cut evergreens, such as box and lonicera, back by one third and deciduous plants, such as privet and beech, to 50cm to 30cm (60 to 120) high, trim their sides to 400mm and lift them base. Mulch coverage dense growth and lift them base. Refer to maintenance requirements to plant schedule for species size and mm)



Edge Woodland Mix

Q1	Q2	Q3	Q4	Q5	Q6	Q7	Q8	Q9	Q10
Q1	Q2	Q3	Q4	Q5	Q6	Q7	Q8	Q9	Q10
Q1	Q2	Q3	Q4	Q5	Q6	Q7	Q8	Q9	Q10

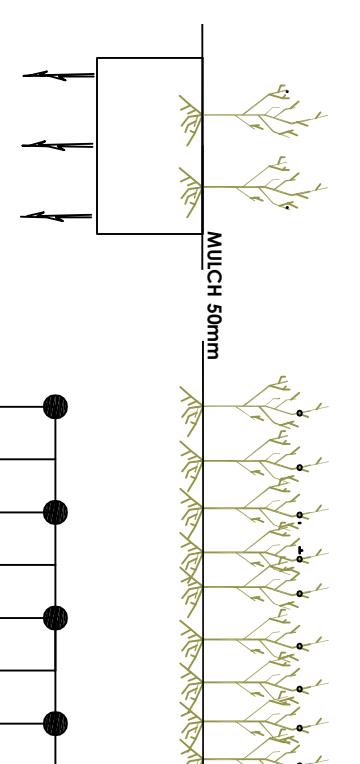
Main Woodland Mix

Q1	Q2	Q3	Q4	Q5	Q6	Q7	Q8	Q9	Q10
Q1	Q2	Q3	Q4	Q5	Q6	Q7	Q8	Q9	Q10
Q1	Q2	Q3	Q4	Q5	Q6	Q7	Q8	Q9	Q10

Edge Woodland Mix

Q1	Q2	Q3	Q4	Q5	Q6	Q7	Q8	Q9	Q10
Q1	Q2	Q3	Q4	Q5	Q6	Q7	Q8	Q9	Q10
Q1	Q2	Q3	Q4	Q5	Q6	Q7	Q8	Q9	Q10

Boundary strip of woodland/edge screen mix. Approx. 2m wide along woodland edge species.



Legend

- Site Boundary
- Existing Woodland and Hedgerows
- Proposed Woodland and Hedgerows
- Proposed FST Trees
- Low Maintenance
- Clipped Hedges (max 2m)
- Shrub Planting Mix

Client Hibernia Steel | **Job no.** Z2-32 | **date** March 23 | **scale** 1:200@A1 | **by** pjm | **notes**

Rev

Rev	Description
1	Annual Ongoing Maintenance

ANNUAL ONGOING MAINTENANCE

1. Mowing season, 2 fertilizer applications/2 edgings with iron 2 spike aerations.
2. Edgings 2/1m up to 1 fertiliser/1 tim to shape (Maintained to 2.2 m height)
3. 6 weeks to 8 weeks to 2m up to 1 fertiliser/1 prune if damaged
4. 6 weeks to 8 weeks to 2m up to 1 fertiliser/1 spike aerate
5. 6 weeks to 8 weeks to 2m up to 1 fertiliser/1 spike aerate
6. 6 weeks to 8 weeks to 2m up to 1 fertiliser/1 spike aerate
7. 6 weeks to 8 weeks to 2m up to 1 fertiliser/1 spike aerate
8. 6 weeks to 8 weeks to 2m up to 1 fertiliser/1 spike aerate

Landscaping Planning Plan

DWG: 23.10.100

Hibernia Steel, Mell, Drogneeda

mda mullein design associates
4 malintrafinghastown.com

Chartered landscape architects